

AXIS 360

COMMERCIAL REAL ESTATE

3001 ½ Gill St.
Suite A
Bloomington, IL
61704
axis360.co

BUILDING SIZE
5,489 SF

YEAR BUILT
1988

LEASE TYPE
Full Gross

AVAILABLE SPACE
1,721 SF

LEASE RATE
\$12.00/SF (\$1,721/month)

PARKING
28 spaces undesignated



200 S. TOWANDA AVENUE, NORMAL

OFFICE | SUITE B | LEASE

This two-tenant building is located just north of Shoppes at College Hills Mall with access off of Towanda Avenue. The building has a shared foyer entry with a private entrance into each suite. Suite A is occupied by an orthodontist.

Suite B is available for lease. It has a large open work room with two private offices immediately within the larger space. From the hallway there are two additional private offices and two restrooms.

Utilities are included in the lease rate.

Great signage available on Towanda Avenue.

The statements and figures herein, while not guaranteed, are secured from sources we believe authoritative. This information is for illustrative purposes only.



Meghan O'Neal, CCIM
meghan.oneal@axis360.co
309-532-1808

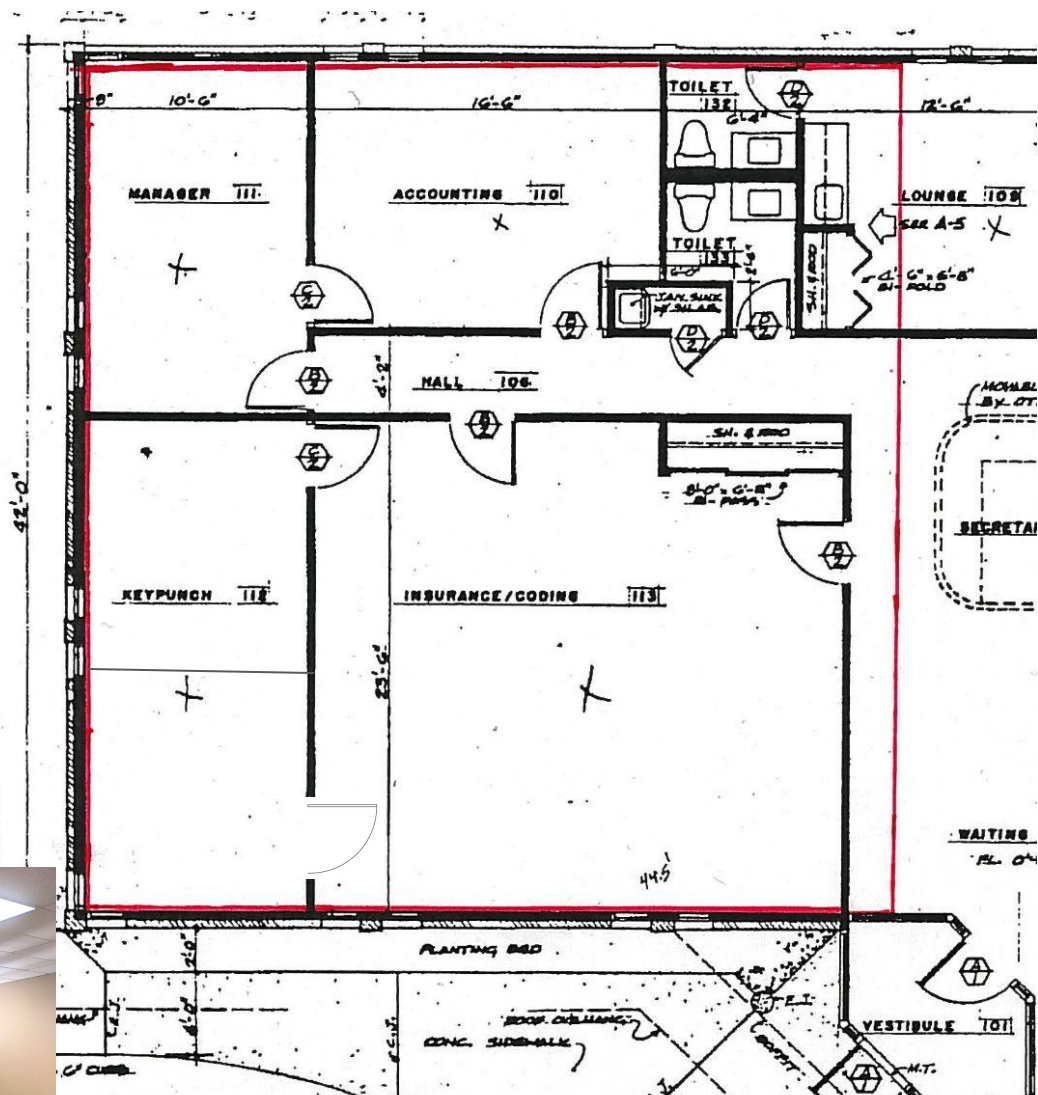
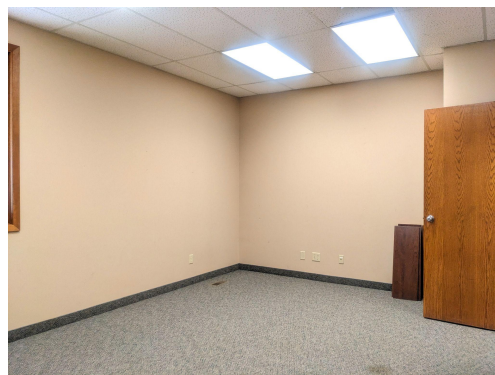
Michael O'Neal
moneal@axis360.co
309-530-3591

Mike Flynn
mflynn@axis360.co
309-270-1565





A large, empty room with a drop ceiling, fluorescent lights, and several windows. The room has a carpeted floor and a wooden door on the left. There are four windows in total, two on the left wall and two on the right wall. The room appears to be a common area or a meeting room.



Mike Flynn
mflynn@axis360.co
309-270-1565

