

AXIS 360

COMMERCIAL REAL ESTATE

3001 ½ Gill St.
Suite A
Bloomington, IL
61704
axis360.co



BUILDING SIZE
5,295 SF

YEAR BUILT
2004

LEASE TYPE
Modified Gross

AVAILABLE SPACE
2,660 SF

LEASE RATE
\$16.00/SF

PARKING
19 spaces undesignated

2206 EASTLAND DRIVE, BLOOMINGTON

OFFICE | SUITE 105 | LEASE

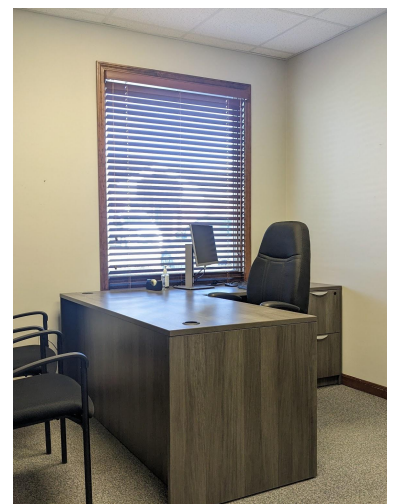
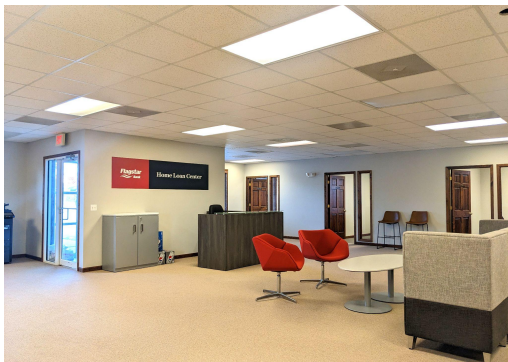
This unit is in Building 100 of a four quad office complex.

This is a professional office suite with a private entrance off of the parking lot. Energy code entryway entering into private suite. Large open work area for reception, cube space, or lounge space. The suite has six (6) private offices lining the exterior of the unit, each with a window.

There are two private restrooms and a kitchenette with door to exterior patio.

Low building turnover, contact listing brokers to show today.

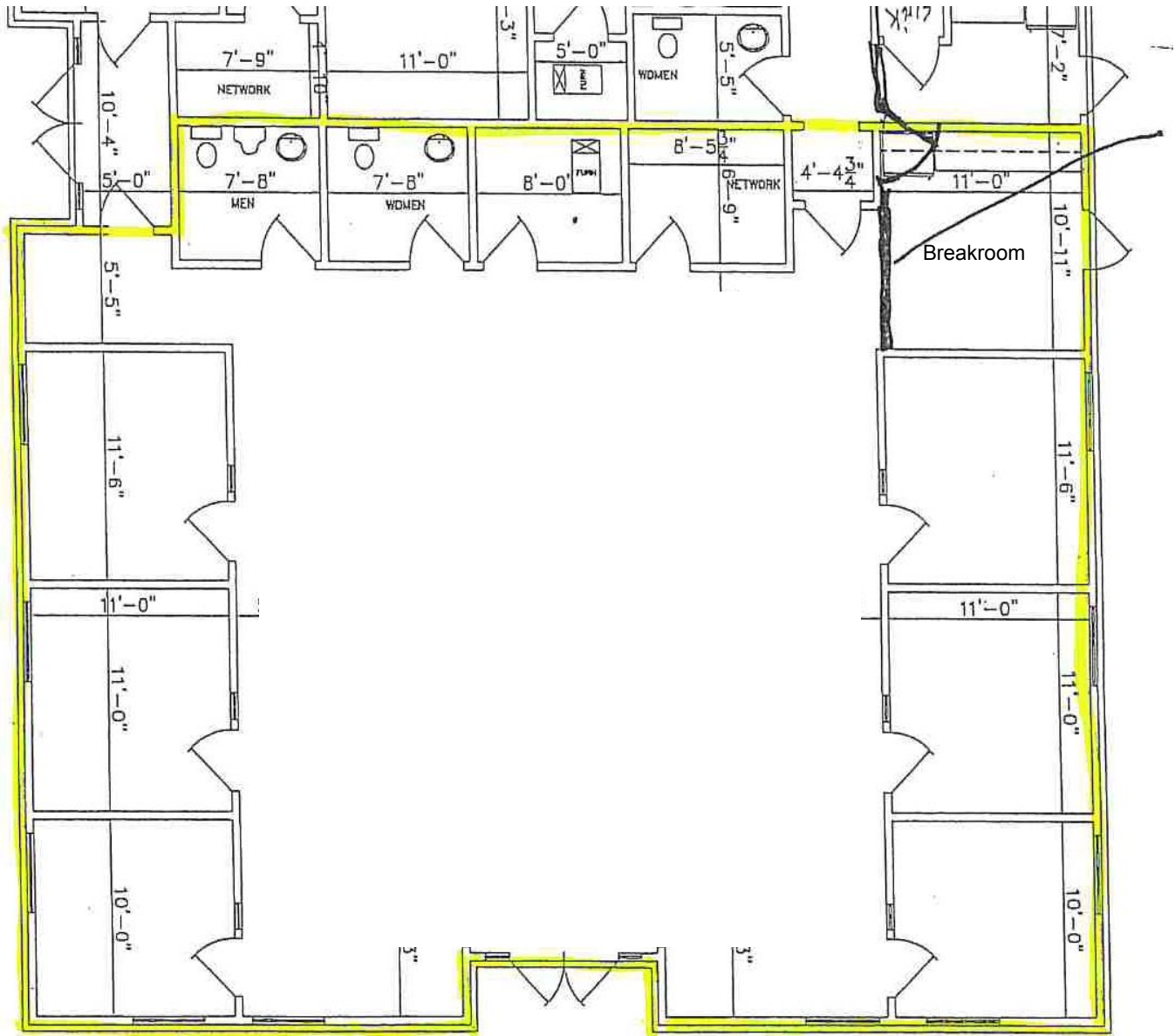
The statements and figures herein, while not guaranteed, are secured from sources we believe authoritative. This information is for illustrative purposes only.



Meghan O'Neal-Rogozinski, CCIM
meghan.oneal@axis360.co
309-532-1808

Michael O'Neal
moneal@axis360.co
309-530-3591





SUITE 105

Meghan O'Neal-Rogozinski, CCIM

meghan.oneal@axis360.co

309-532-1808

Michael O'Neal

moneal@axis360.co

309-530-3591

