



3001.5 Gill St.
Suite A
Bloomington, IL
61704
axis360.co



BUILDING SIZE
27,466 SF

YEAR BUILT
1974

LEASE TYPE
Modified Gross

AVAILABLE SPACE
1,550 & 4,798 & 1,350

LEASE RATE
\$12.00–14.00/SF

UTILITY CHARGE
\$2.00/SF

PARKING SPACES
104

808 ELDORADO STREET, BLOOMINGTON OFFICE SUITES | LEASE

SUITE 200 | 4,798 SF

Large open suite on the first floor with a large open area currently configured with cubicles, multiple entrances for employees and for customers. Nice customer entrance airlock with reception, two private offices, conference room and private breakroom.

SUITE 110 | 1,550 SF

First floor private suite with small reception and six (6) private offices. Multi-tenant building with two main entrances, common area with elevator and shared restrooms. This suite has a secondary egress door that could be used for an employee entrance.

SUITE 202 | 1,350 SF

First floor private suite, mostly open space with a two offices built in and a storage room. Shared restroom in the hallway, but has it's own private entrance from the south side of the building. Lot of parking.

BUILDING TENANTS:



The statements and figures herein, while not guaranteed, are secured from sources we believe authoritative. This information is for illustrative purposes only.

Meghan O'Neal-Rogozinski, CCIM
meghan.oneal@axis360.co
309-532-1808

Michael O'Neal
moneal@axis360.co
309-530-3591





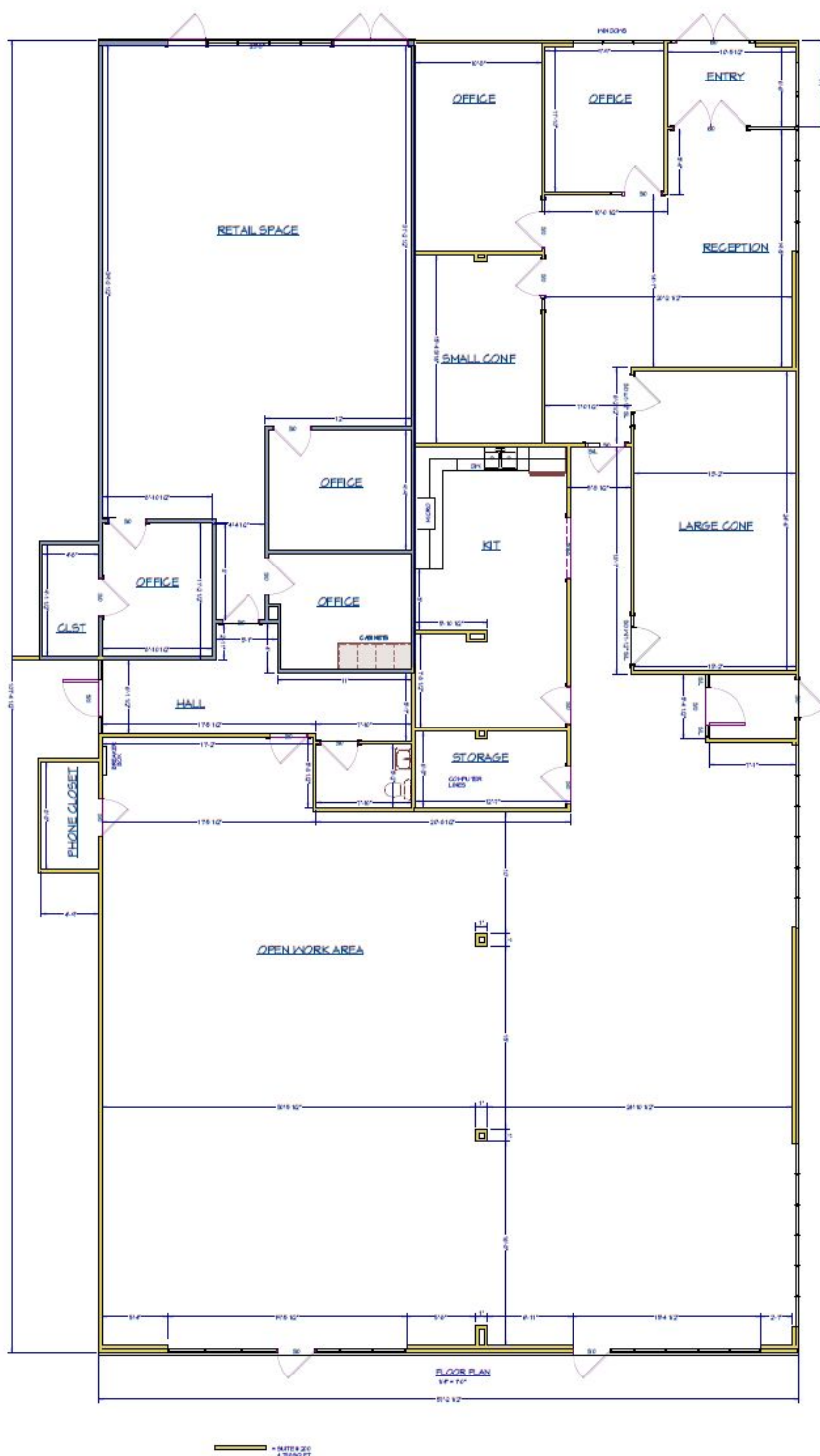


3001.5 Gill St. Suite A
Bloomington, IL 61704

axis360.co

808 ELDORADO STREET BLOOMINGTON, IL

SUITE 200



Meghan O'Neal-Rogozinski, CCIM

meghan.oneal@axis360.co

309-532-1808

Michael O'Neal

moneal@axis360.co

309-530-3591

