

AXIS 360

COMMERCIAL REAL ESTATE

3001½ Gill St.
Suite A
Bloomington, Illinois

www.axis360.co



Former Bloomington Post Office Building

ADDRESS

1209 Towanda Avenue
Bloomington, Illinois

SIZE

53,000 sq. ft.

ASKING

\$2,600,000

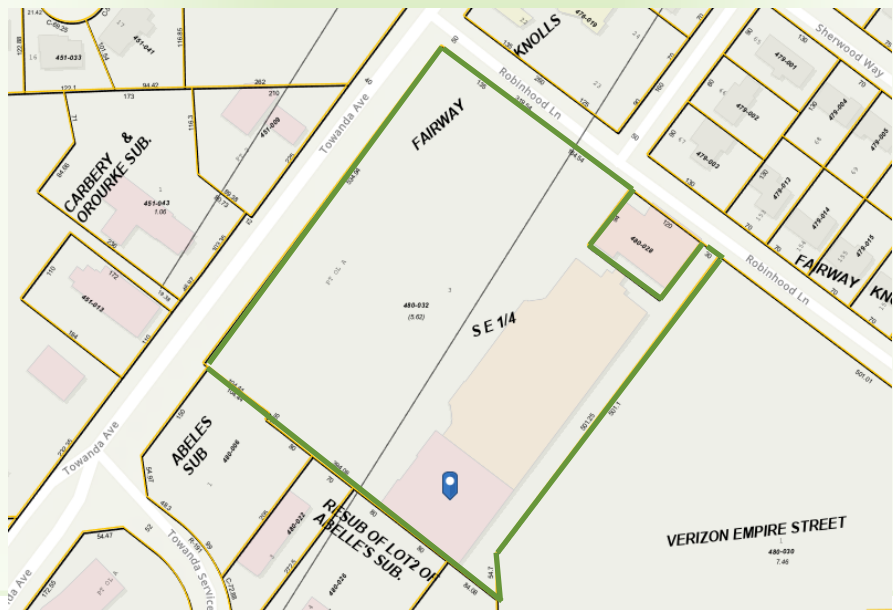
PARCEL

14-34-480-004

ZONED

B-1 (General Commercial District)

This property was the former Bloomington Post Office and includes a Dollar General, small barber shop, and a coffee shop kiosk. The post office space has 35,000 sq. ft. and is currently vacant. The Dollar General has a NNN leasehold thru February 28, 2025. There is great visibility and ample parking. The entire property is in a TIF District.



Mike Talkington
Commercial Broker
mtalkington@axis360.co
(309) 530-4913

Visit our Website:
www.axis360.co



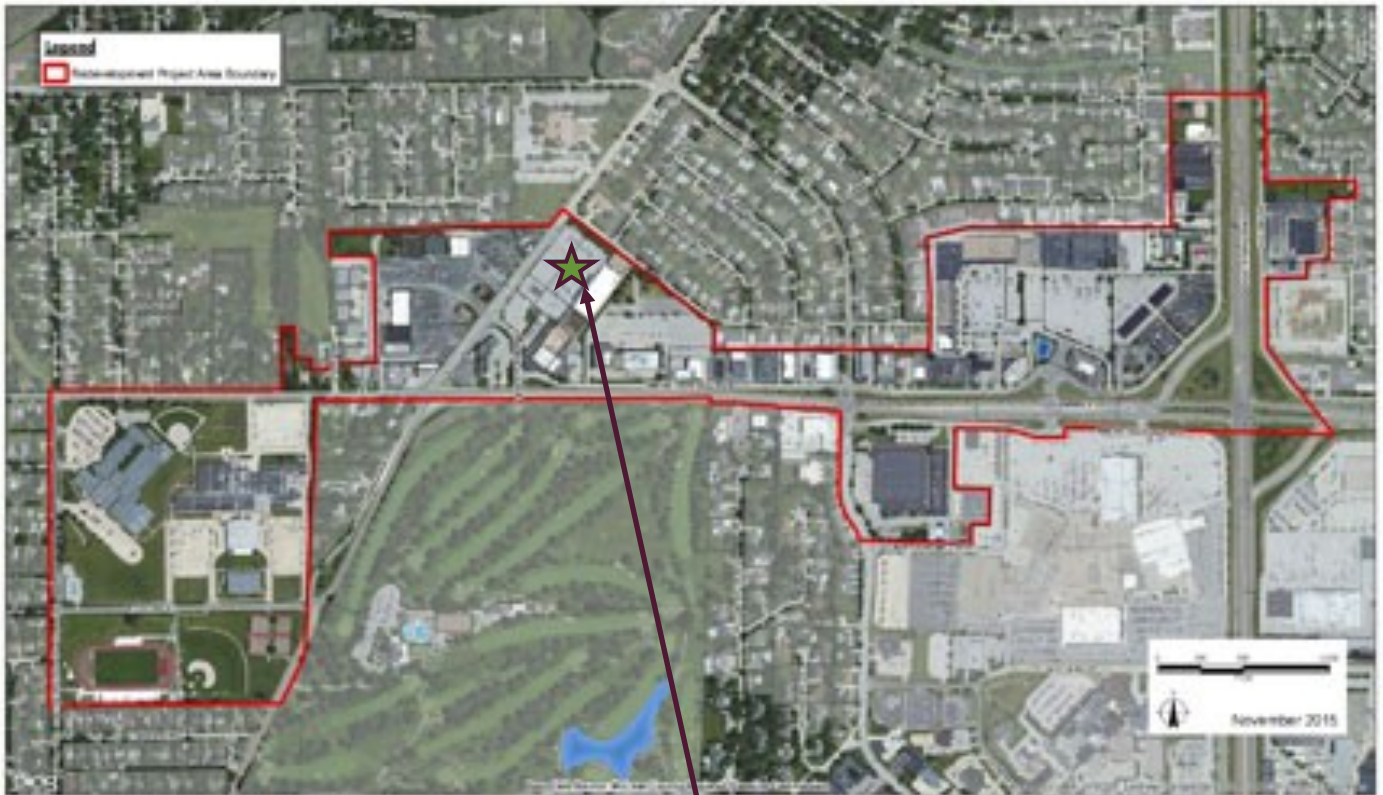


Exhibit A - Redevelopment Project Area Boundary

Empire Street Redevelopment Project Area

PCW PLANNERS

