



COMMERCIAL REAL ESTATE

3001 ½ Gill St.
Suite A
Bloomington, IL
61704
axis360.co



BUILDING SIZE

3,000 SF

LOT SIZE

12,653 SF

PRICE

\$275,000

ZONED

B1

PARCELS

21-05-182-002

BUILT

1988

TAXES (2021)

\$6,984

PARKING

16 spaces

314 STILLWELL STREET, BLOOMINGTON TWO TENANT BUILDING | **FOR SALE**

The owner of this building occupies Unit A, 1,000 SF unit, which is a little more than half finished office space with an attached unfinished garage space with 10' overhead door. This unit has two private offices with lots of natural light, a restroom with shower, an open work that leads to the storage space. Garage has mop sink, overhead door, and additional mezzanine storage.

Unit B is currently leased to Walter Jones Worship Center, previously occupied by Butternut Bakery Thrift Shop. Their unit is 2,000 SF space with open retail and a warehouse with loading dock in the back.



The statements and figures herein, while not guaranteed, are secured from sources we believe authoritative. This information is for illustrative purposes only.

Meghan O'Neal-Rogozinski, CCIM

meghan.oneal@axis360.co

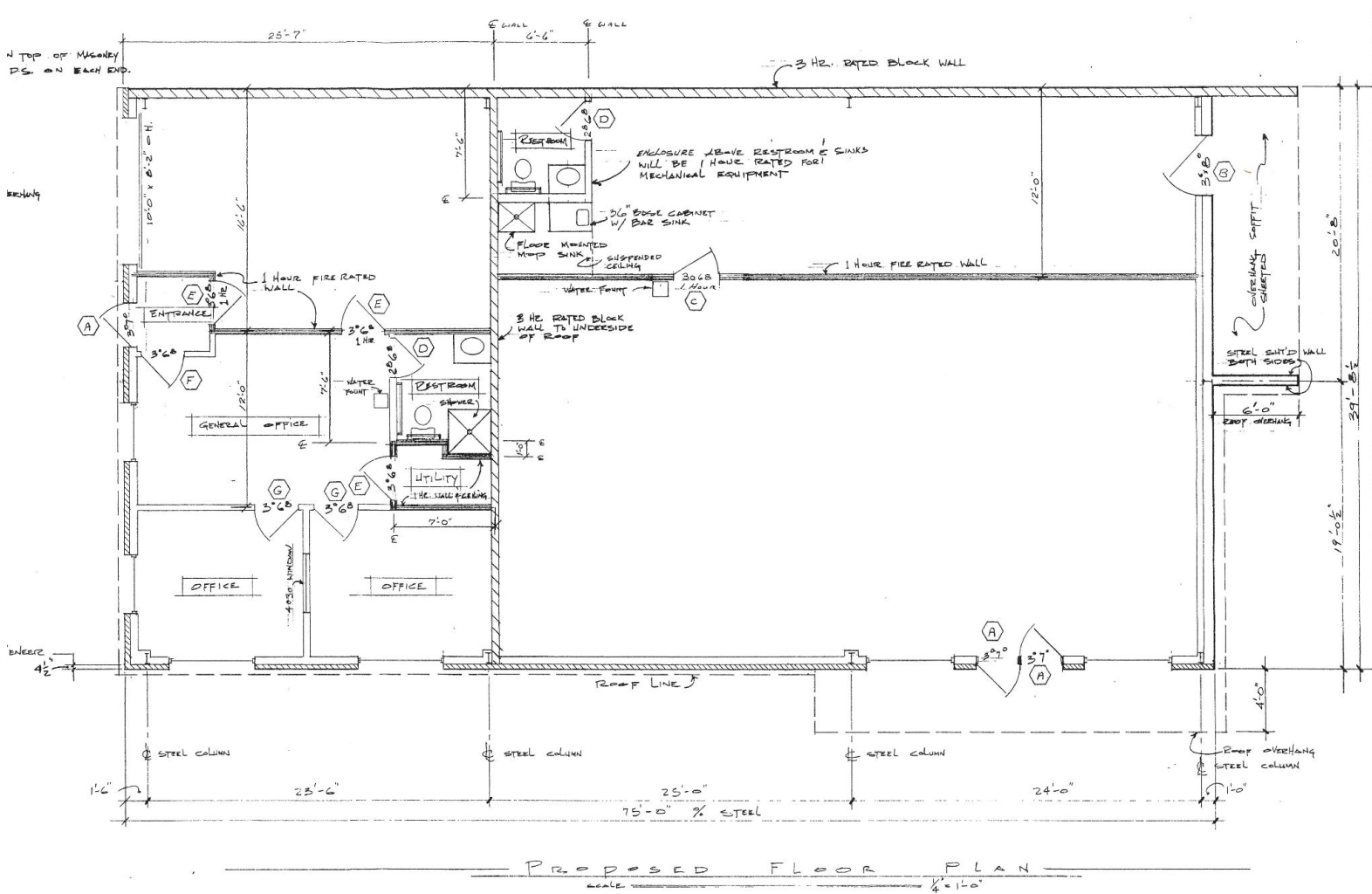
309-532-1808

Michael O'Neal

moneal@axis360.co

309-530-3591





Meghan O'Neal-Rogozinski, CCIM

meghan.oneal@axis360.co

309-532-1808

Michael O'Neal

moneal@axis360.co

309-530-3591

