

# AXIS 360

COMMERCIAL REAL ESTATE

3001½ Gill St.  
Suite A  
Bloomington, Illinois

[www.axis360.co](http://www.axis360.co)



## FOR SALE—Commercial Lot

### ADDRESS

1008 Wylie Drive  
Bloomington, Illinois

### ACREAGE

1.57 acres

### TAX ID

14-31-351-013

### ZONED

B-1 (Highway Business)

### ASKING

\$270,000 (\$3.95/sq. ft.)

- ◆ Great location on Wylie just off of Market Street and directly behind Farm and Fleet.
- ◆ Fully developed commercial lot with sewer and water—ready to build.
- ◆ Ideal for retail or restaurant development.

### Businesses nearby:



**Greg Yount**  
Commercial Broker  
[gregyount309@gmail.com](mailto:gregyount309@gmail.com)  
(309) 530-9333

Visit our Website:  
[www.axis360.co](http://www.axis360.co)

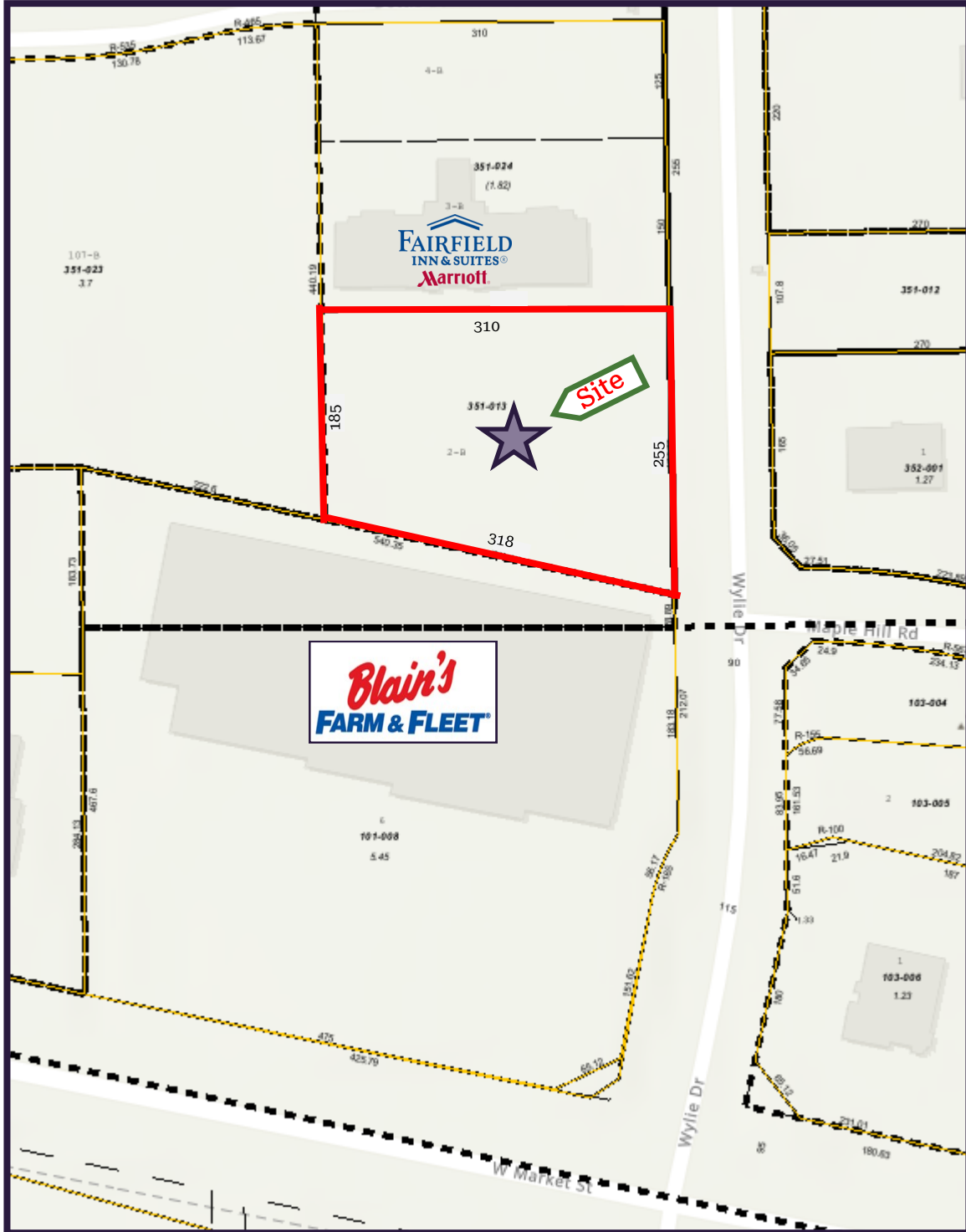




3001½ Gill St.  
Suite A  
Bloomington, Illinois

[www.axis360.co](http://www.axis360.co)

Visit our Website:



Greg Yount, Broker

[gregyout309@gmail.com](mailto:gregyout309@gmail.com)

(309) 530-9333