



3001 ½ Gill St.  
Suite A  
Bloomington, IL  
61704  
[axis360.co](http://axis360.co)



**SPACE AVAILABLE**  
13,100 SF

**LEASE RATE**  
\$8.00/SF

**LEASE TYPE**  
Modified Gross

**REMODELED**  
2023

**ZONED**  
M1

**POWER**  
3 Phase-480V & 208V

## 136 GREENWOOD AVE, BLOOMINGTON

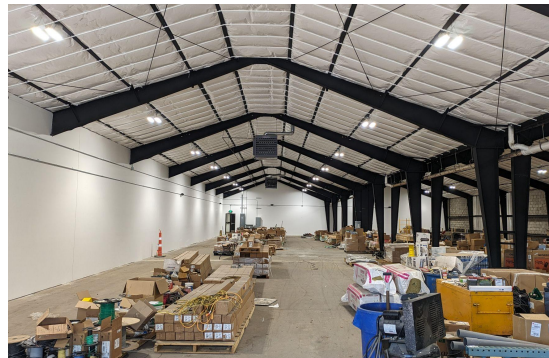
### WAREHOUSE SPACE | **FOR LEASE**

Self contained flex unit available for lease inside of Weber Electric's new building, fully renovated in 2023.

Currently the space is wide open with rough in for gas and plumbing. Landlord will provide (1) ADA restroom per code at designated rough in location. 14' overhead door enters directly into unit. Additionally, there is a detached dock that can be shared with Weber Electric.

Tenant pay utilities.

Please make all inquiries for showings directly to the listing broker.



*The statements and figures herein, while not guaranteed, are secured from sources we believe authoritative. This information is for illustrative purposes only.*

**Meghan O'Neal-Rogozinski, CCIM**  
[meghan.oneal@axis360.co](mailto:meghan.oneal@axis360.co)  
309-532-1808

**Michael O'Neal**  
[moneal@axis360.co](mailto:moneal@axis360.co)  
309-530-3591

