

AXIS 360

COMMERCIAL REAL ESTATE

3001½ Gill St.
Suite A
Bloomington, Illinois

www.axis360.co



FOR SALE - Retail/Showroom/Warehouse

ADDRESS

2027 Ireland Grove Rd
Bloomington, Illinois

SIZE

15,120 sq. ft.

ASKING PRICE

\$1,600,000

LOT SIZE

2.15 Acres

ZONING

M-2

CONSTRUCTION

24" Insulated Walls

PARCEL

21-15-226-033

Terrific retail showroom and warehouse with Veteran's Parkway visibility. First Class Retail Addition Built in 2001 with 24" insulated walls, beautiful showroom, oak trim counters & 6 panel doors. A 1,365 square ft. covered patio graces the rear of the property, creating an inviting atmosphere off the main parking lot.



Mike Talkington
Commercial Broker
mtalkington@axis360.co
(309) 530-4913

Visit our Website:
www.axis360.co

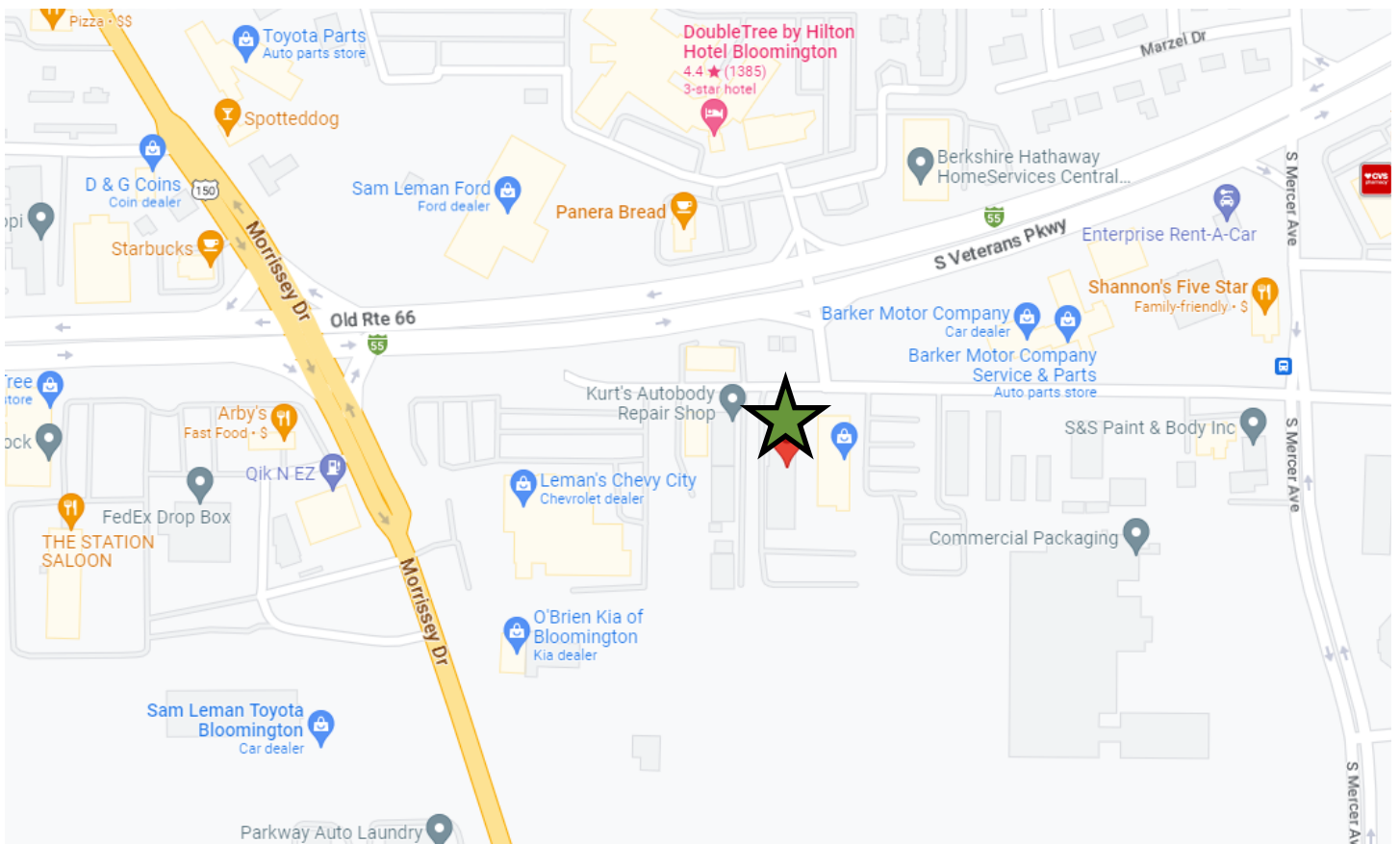
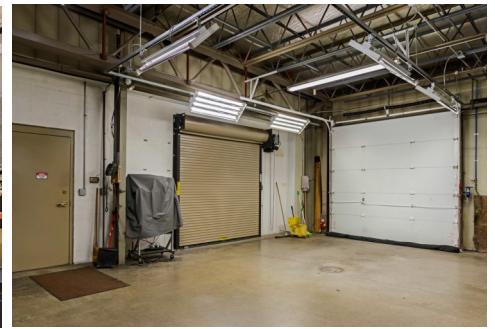
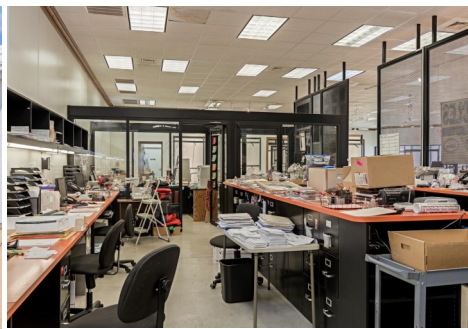
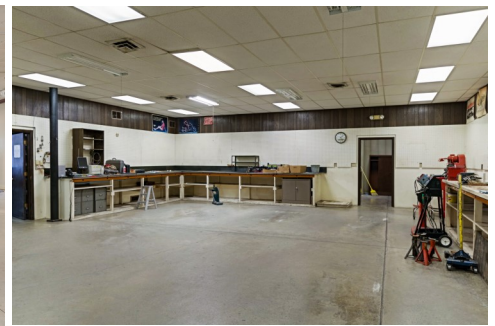
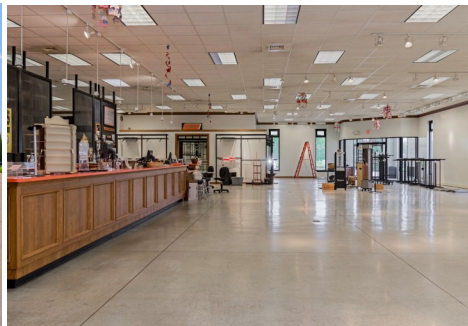




3001½ Gill St.
Suite A
Bloomington, Illinois

www.axis360.co

Visit our Website:



Mike Talkington, Commercial Broker

mtalkington@axis360.co

(309) 530-4913