

AXIS 360

COMMERCIAL REAL ESTATE

3001 ½ Gill St.
Suite A
Bloomington, IL
61704
axis360.co



BUILDING SIZE
4,800 SF

YEAR BUILT
1980

LEASE TYPE
Modified Gross

AVAILABLE SPACE
2,985 SF

LEASE RATE
\$2,000/Month + utilities

ZONING
B2

722 W. CHESTNUT ST., BLOOMINGTON

OFFICE SPACE | LEASE

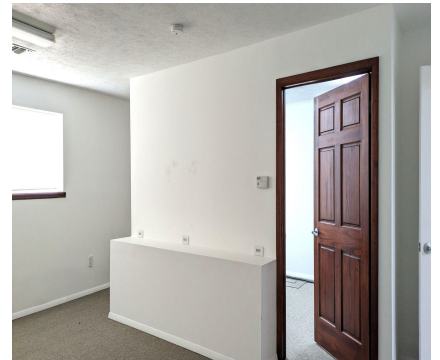
We are pleased to offer a nicely finished office space in a flex building where the owner occupies the back warehouse portion of the building. With onsite ownership, the property will be well maintained, snow plowed, and problems cared for in a timely manner.

This building is situated along W. Chestnut, next door to Chestnut Health Systems Family Health Center and their new Family Dental facility. This space would make for a great office for ancillary type services with large open rooms, multi-purpose, conference room space and private offices, multiple restrooms and a kitchenette.

Rents are below market and flexible lease terms can be negotiated.

Please reach out for a property tour today.

The statements and figures herein, while not guaranteed, are secured from sources we believe authoritative. This information is for illustrative purposes only.



Meghan O'Neal-Rogozinski, CCIM
meghan.oneal@axis360.co
309-532-1808

Michael O'Neal
moneal@axis360.co
309-530-3591

