



3001 ½ Gill St. Suite A
Bloomington, IL 61704

axis360.co

1730 BRADFORD LANE NORMAL, IL



CONSTITUTION TRAIL CENTRE

BUILDING SIZE

19,600 SF

YEAR BUILT

2007

LEASE TYPE

NNN: \$5.31/SF

LEASE RATE

\$13.00–14.00/SF

AVAILABLE SPACE

1,610 & 1,600 SF

TRAFFIC COUNT

13,700 cpd Main Street

Building 1730 is a 19,600 SF retail building within the greater shopping center, anchored by Schnuck's grocery store and AMF Movie Theater. The multi-tenant building tenants include Boyle Dental, Shear Logic, Moe's Southwest Grill, Castle Nail Spa, OAF OnCall and PIP Printing. There is plenty of parking in this high visibility location seen from Rt 51/Main Street.

SUITE 175: 1,610 SF

- This suite is raw space ready for finish. The space is situated next to OSF OnCall and Shear Logic hair salon, inline space.

SUITE 180: 1,600 SF

- This suite is currently occupied by Shear Logic hair salon, they will be vacating at the end of 2023. Space is suited for another salon to take possession. The name, Google reviews, signs, website, etc. can be purchased from current owner. Please inquire for more details.



The statements and figures herein, while not guaranteed, are secured from sources we believe authoritative. This information is for illustrative purposes only.

Meghan O'Neal-Rogozinski, CCIM

meghan.oneal@axis360.co

309-532-1808

Michael O'Neal

moneal@axis360.co

309-530-3591









3001 ½ Gill St. Suite A
Bloomington, IL 61704

axis360.co

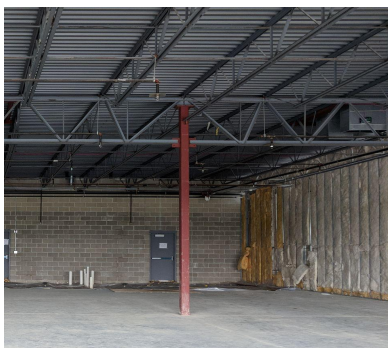
1730 BRADFORD LANE NORMAL, IL

Bay # 165A	Boyle Dental	2,395 sf
Bay # 168	LEASED	1,615 sf
Bay # 170	LEASED	1,615 sf
Bay # 175	AVAILABLE	1,610 sf
Bay # 180	Shear Logic	1,600 sf
Bay # 185/190	AVAILABLE	3,200 sf
Bay # 195	Moe's SW Grill	2,400 SF
Bay # 200	Gaming Parlor	1,560 SF
Bay # 205	Castle Nail Spa	1,605 sf
Bay # 210	AVAILABLE	1,610 sf

	#210
CASTLE NAIL SPA	#205
Gaming: Coming Soon	#200

			1,610 SF AVAILABLE	SHEAR LOGIC	AYR WELLNESS	
#165	#168	#170	#175	#180	#185	#195

SUITE 175



SUITE 185



Meghan O'Neal-Rogozinski, CCIM

meghan.oneal@axis360.co

309-532-1808

Michael O'Neal

moneal@axis360.co

309-530-3591

