



3001 1/2 Gill St.
 Suite A
 Bloomington, IL
 61704
axis360.co



BUILDING SIZE
 10,227 SF

YEAR BUILT
 1998

LEASE TYPE
 Modified Gross

AVAILABLE SPACE
 2,507 SF

LEASE RATE
 \$12.00/SF

PARKING
 36 spaces undesignated

6 HEARTLAND DRIVE, SUITE B

BLOOMINGTON | OFFICE | **SUBLEASE**

This multi-tenant office building is centrally located in Bloomington, just east of Veterans Parkway in a professional office area. The building tenants include First Mid Ag Services and Bloomington Family Eye Care. The property is minutes from the main retail corridor, the hospitals and Bloomington’s large employers.

This space is occupied by APEX Systems. It was recently refreshed with new paint and carpeting. It shares an entrance with Bloomington Family Eye Care, has a reception desk, intake room, two private offices, break room, open collaboration space, men’s and women’s restrooms and a small basement storage area.

Current Tenant has term through April 30, 2025.

If interested in a property tour, please contact listing broker.

Nearby Businesses:



The statements and figures herein, while not guaranteed, are secured from sources we believe authoritative. This information is for illustrative purposes only.

Meghan O’Neal-Rogozinski, CCIM
meghan.oneal@axis360.co
 309-532-1808

Michael O’Neal
moneal@axis360.co
 309-530-3591

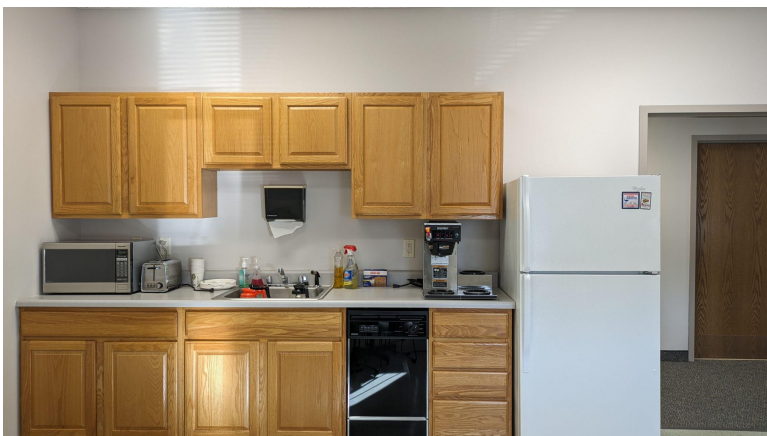
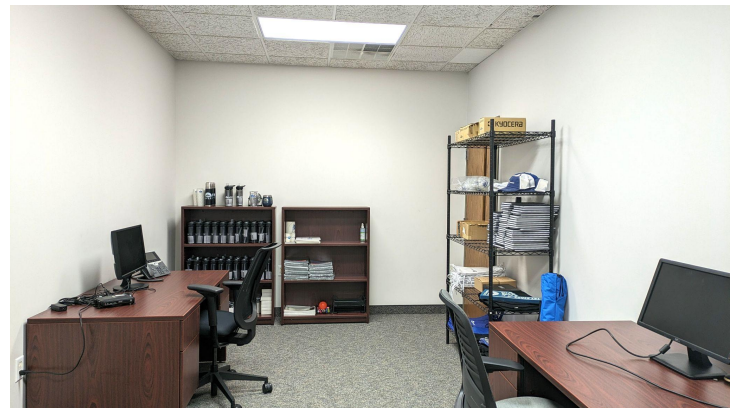
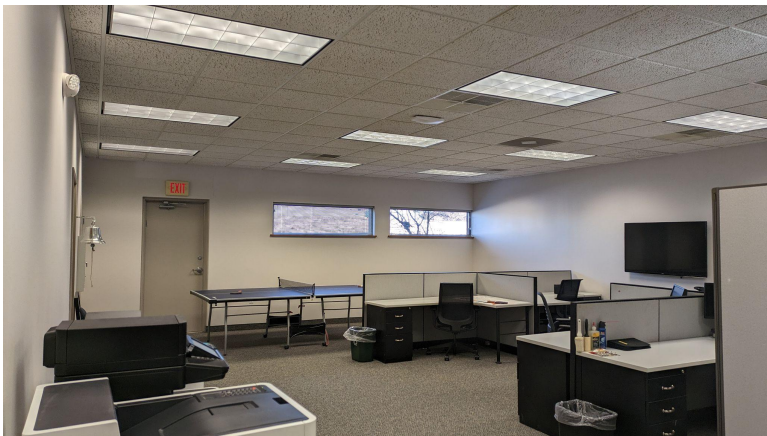
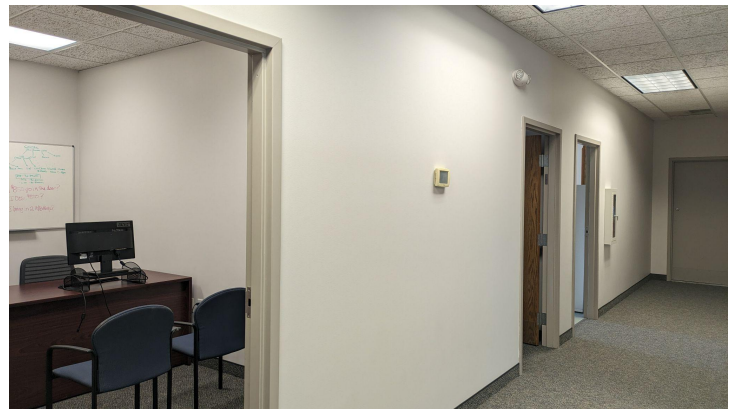




3001.5 Gill St. Suite A
Bloomington, IL 61704

axis360.co

6 HEARTLAND DRIVE BLOOMINGTON, ILLINOIS



Meghan O'Neal-Rogozinski, CCIM

meghan.oneal@axis360.co

309-532-1808

Michael O'Neal

moneal@axis360.co

309-530-3591

