

AXIS 360

COMMERCIAL REAL ESTATE

3001½ Gill St.
Suite A
Bloomington, Illinois

www.axis360.co



FOR SALE—Church or Redevelopment Site

ADDRESS

401 E. Jefferson
Bloomington, Illinois

BUILDING SIZE

30,394 sq. ft.

LOT SIZE

0.61 acres

PRICE

\$650,000

ZONED

D-2

PARCEL

21-04-407-007

YEAR BUILT

1888

Gorgeous lofted Sanctuary with balcony and stained glass, two vestibule entries as well as a handicapped accessible entry, executive and administrative offices, large nursery, and lounge.

Lower level recently remodeled, making a terrific fellowship space with full kitchen, café and restrooms.

There are eight (8) forced air systems in the building as well as

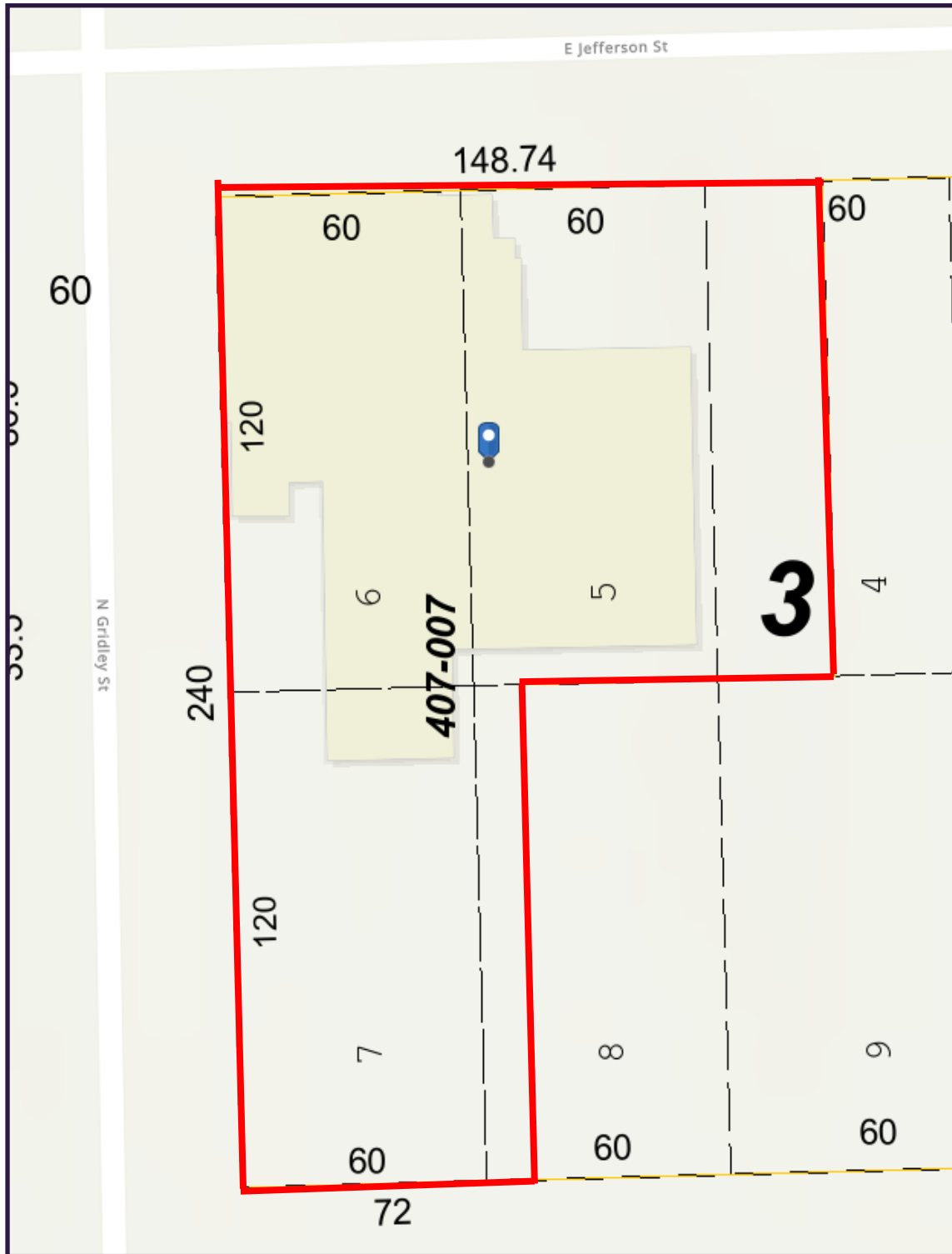


central air. Significant roof work completed in the last 5 to 10 years.

Laura Pritts
Designated Managing Broker
lptritts@axis360.co
(309) 824-0507

Visit our Website:
www.axis360.co



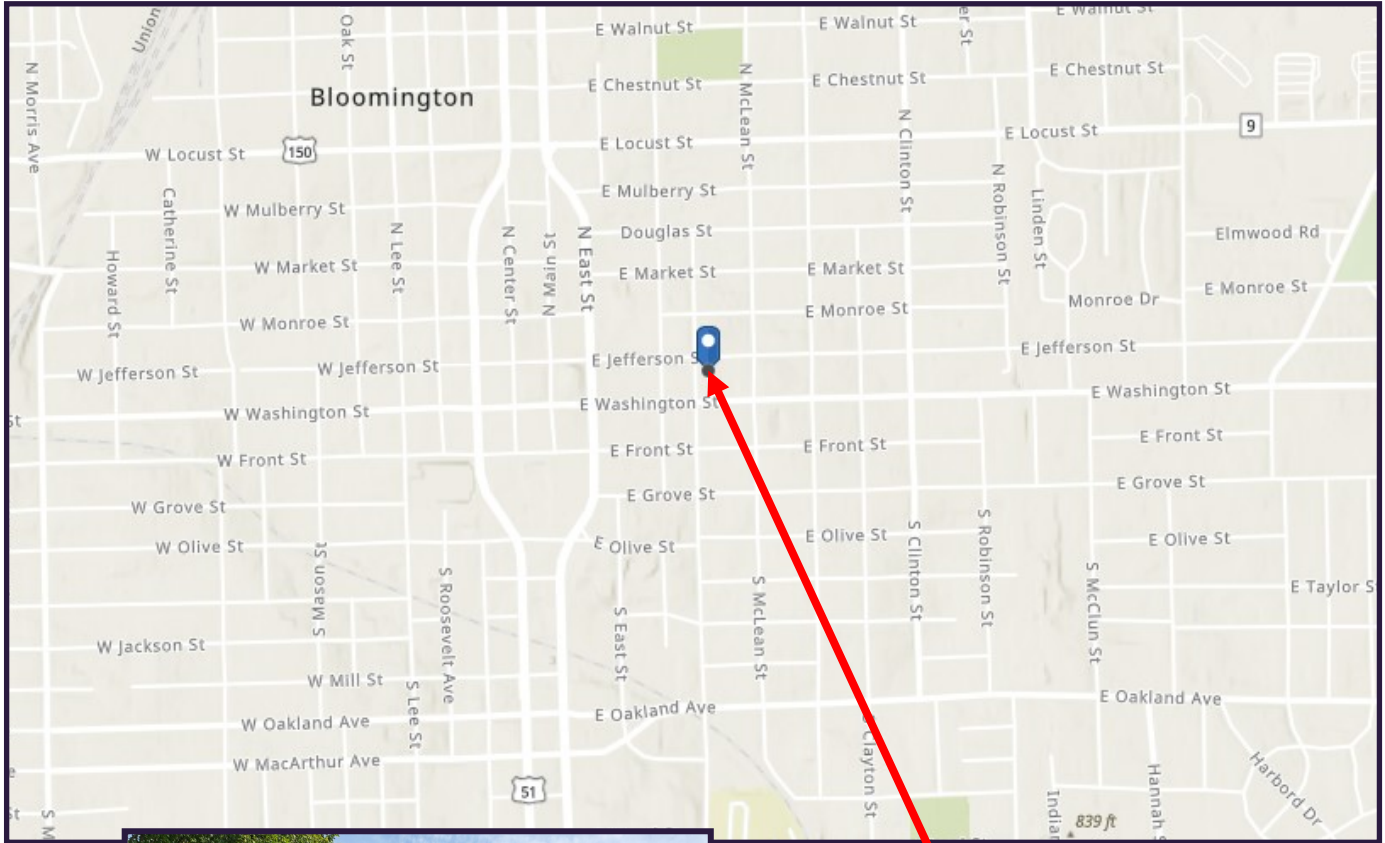




3001½ Gill St.
Suite A
Bloomington, Illinois

www.axis360.co

Visit our Website:



Laura Pritts, Designated Managing Broker

lpritts@axis360.co

(309) 824-0507