



3001 ½ Gill St. Suite A
Bloomington, IL 61704

axis360.co

**406–408 DETROIT DR
BLOOMINGTON, IL**



LOT SIZE

2.41 acres

SALE PRICE

\$5.00/SF

ZONING

B1–General Business District

TAXES

\$ 5,870 (2021)

PARCEL NUMBERS

22-07-225-003

22-07-225-004

Bloomington's east side has continued to develop making Towanda Barnes a busy artery for residents of the growing eastside to commute to and from work, school and leisure activities. East of Towanda Barnes from Ireland Grove Road is Benjamin Elementary and Cornerstone Christian Academy and growing housing development at The Grove on Kickapoo Creek.

The immediate area has a mixture of flex buildings which house many of Bloomington/Normal's contractor and tradesman. But also is home to many workout facilities, gym activity centers, including an indoor tennis center.

With affordable landing pricing, easy access and great visibility, these lots are a perfect place to develop new or expanding business.

The statements and figures herein, while not guaranteed, are secured from sources we believe authoritative. This information is for illustrative purposes only.

Meghan O'Neal-Rogozinski, CCIM

meghan.oneal@axis360.co

309-532-1808

Michael O'Neal

moneal@axis360.co

309-530-3591

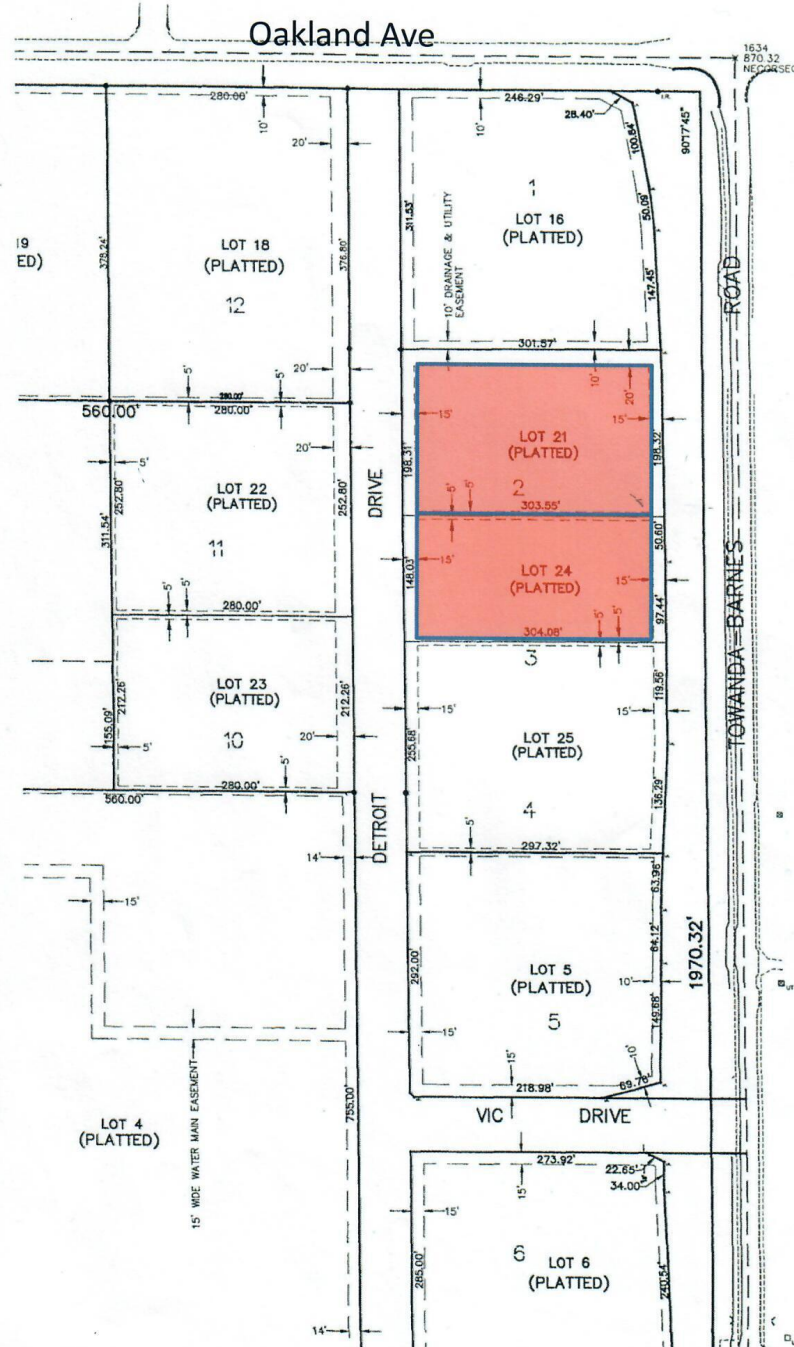




3001 1/2 Gill St. Suite A
Bloomington, IL 61704

axis360.co

**406-408 DETROIT DR
BLOOMINGTON, IL**



Meghan O'Neal-Rogozinski, CCIM

meghan.oneal@axis360.co

309-532-1808

Michael O'Neal

moneal@axis360.co

309-530-3591

