



3001 1/2 Gill St. Suite A
 Bloomington, IL 61704
axis360.co

406-408 DETROIT DR BLOOMINGTON, IL



LOT SIZE

2.41 acres

SALE PRICE

\$5.00/SF

ZONING

B1-General Business District

TAXES

\$ 6,700 (2023)

PARCEL NUMBERS

22-07-225-003
 22-07-225-004

Bloomington's east side has continued to develop, making Towanda Barnes a busy artery for residents commuting to and from work, school, and leisure activities. East of Towanda Barnes, from Ireland Grove Road, you'll find Benjamin Elementary, Cornerstone Christian Academy, and the growing housing development at The Grove on Kickapoo Creek.

The immediate area features a mix of flex buildings, home to many of Bloomington/Normal's contractors and tradespeople. Additionally, the area hosts numerous workout facilities, gym activity centers, and an indoor tennis and pickleball center.

With affordable land prices, easy access, and great visibility, these lots are ideal for new or expanding businesses.

The statements and figures herein, while not guaranteed, are secured from sources we believe authoritative. This information is for illustrative purposes only.

Meghan O'Neal-Rogozinski, CCIM

meghan.oneal@axis360.co

309-532-1808

Michael O'Neal

moneal@axis360.co

309-530-3591

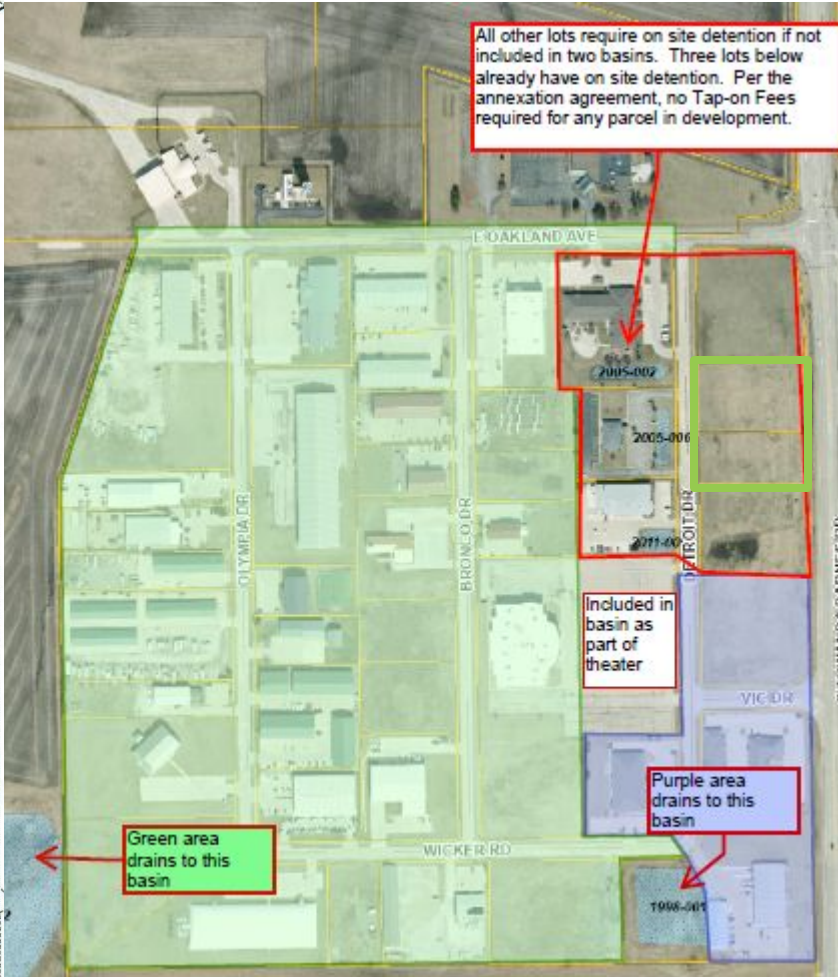
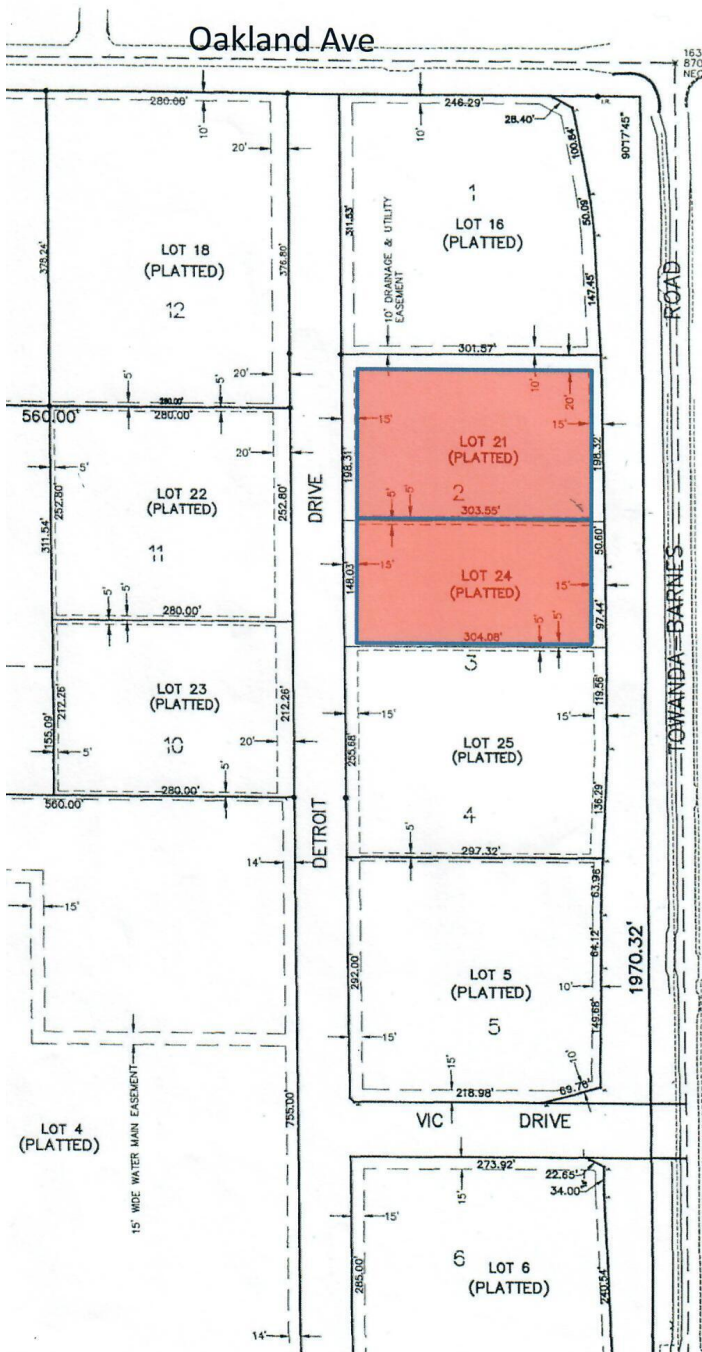




3001 1/2 Gill St. Suite A
Bloomington, IL 61704

axis360.co

406-408 DETROIT DR BLOOMINGTON, IL



****On-Site Detention will be Required**

Meghan O'Neal-Rogozinski, CCIM

meghan.oneal@axis360.co

309-532-1808

Michael O'Neal

moneal@axis360.co

309-530-3591

