

# AXIS 360

COMMERCIAL REAL ESTATE

3001½ Gill St.  
Suite A  
Bloomington, Illinois

[www.axis360.co](http://www.axis360.co)



## FOR SALE: 21,762 Sq. Ft. Industrial Flex Buildings

### ADDRESS

1011-1015 E. Lafayette  
Bloomington, Illinois

### SIZE

19,602 + 2,160 sq. ft.

### ASKING

\$1,200,000

### ZONED

M-1 (Restricted Manufacturing)

### LOT SIZE

3.60 acres

### PARCEL #

21-10-351-049

### UTILITIES

City water & sewer  
Electric  
Gas

### Building Highlights

- ◆ Two 10-foot Dock Doors
- ◆ New \$400K Roof in 2023
- ◆ 3-Phase Electric
- ◆ Fully Sprinklered
- ◆ LED Lighting
- ◆ 7 Rooftop HVAC units
- ◆ Heated and cooled throughout
- ◆ Plenty of parking
- ◆ Laundry Equipment can stay or go
- ◆ Filtered Drain System



Main Building  
15,067 sq. ft. warehouse  
4,535 sq. ft. office

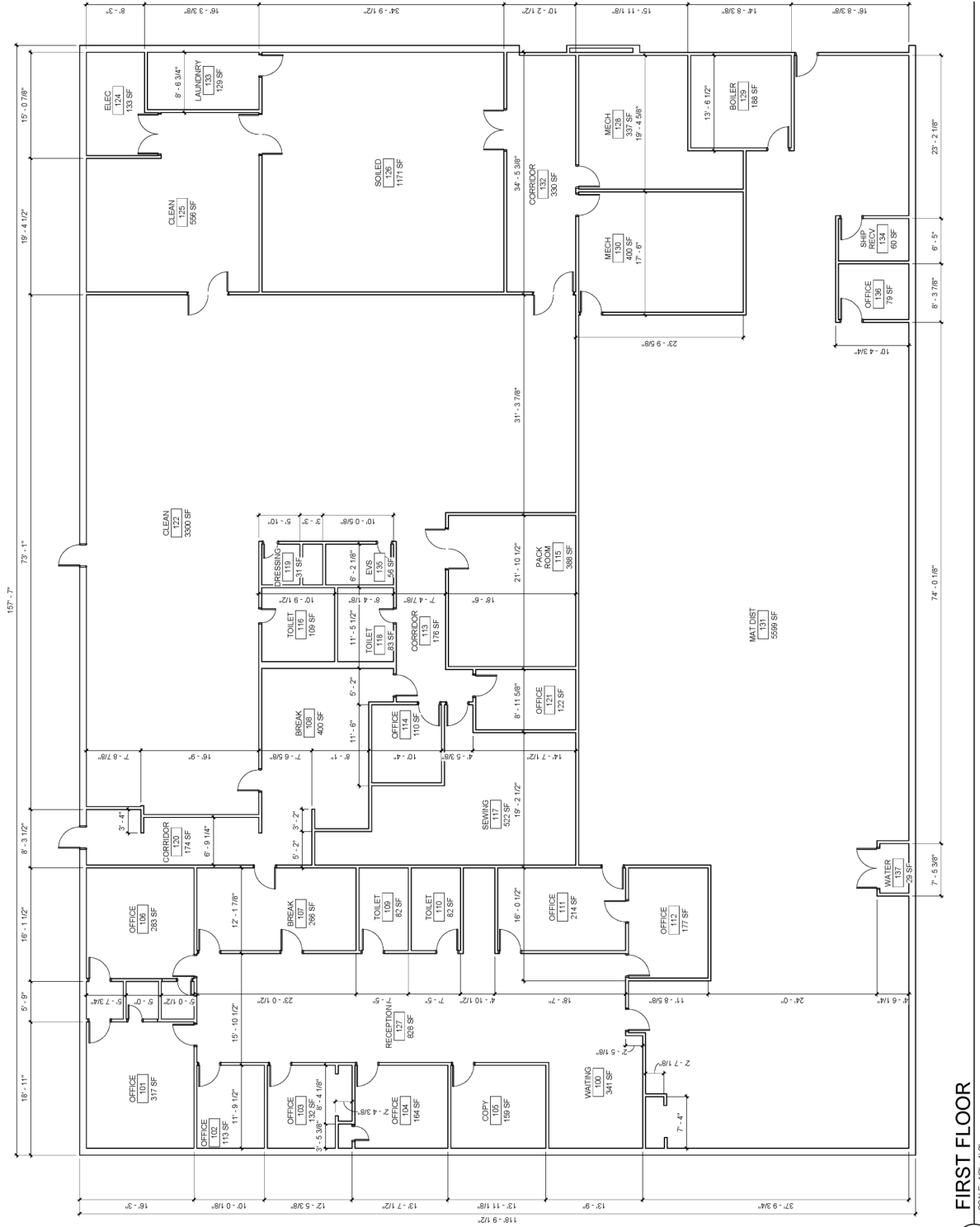
Pole Building  
2,160 sq. ft.

**Laura Pritts**  
Designated Managing Broker  
[lptritts@axis360.co](mailto:lptritts@axis360.co)  
(309) 824-0507

Visit our Website:  
[www.axis360.co](http://www.axis360.co)







1 FIRST FLOOR  
SCALE: 1/8" = 1'-0"