



3001 ½ Gill St.
Suite A
Bloomington, IL
61704
axis360.co



BUILDING SIZE
9,486 SF

YEAR BUILT
2014

LEASE TYPE
Modified Gross

AVAILABLE SPACE
9,486 SF

LEASE RATE
\$13.00/SF

PARKING
35

AREA BUSINESSES

1602 TULLAMORE AVE, BLOOMINGTON FREESTANDING OFFICE BLDG | LEASE

Freestanding office building situated at the corner of Ireland Grove Road and Tullamore Avenue, which is an entry to Ireland Grove Business Park is available for lease. The property is east of State Farm Corporate South Complex with direct access via Ireland Grove Road and easy access to the Veterans Parkway corridor.

This building has two entrances. The west wing of the building has twelve (12) offices, conference room, restrooms and breakroom.

The east wing has four (4) private offices, restrooms, breakroom, large open collaborative area and storage room with exterior access.



The statements and figures herein, while not guaranteed, are secured from sources we believe authoritative. This information is for illustrative purposes only.

Meghan O'Neal-Rogozinski, CCIM
meghan.oneal@axis360.co
309-532-1808

Michael O'Neal
moneal@axis360.co
309-530-3591

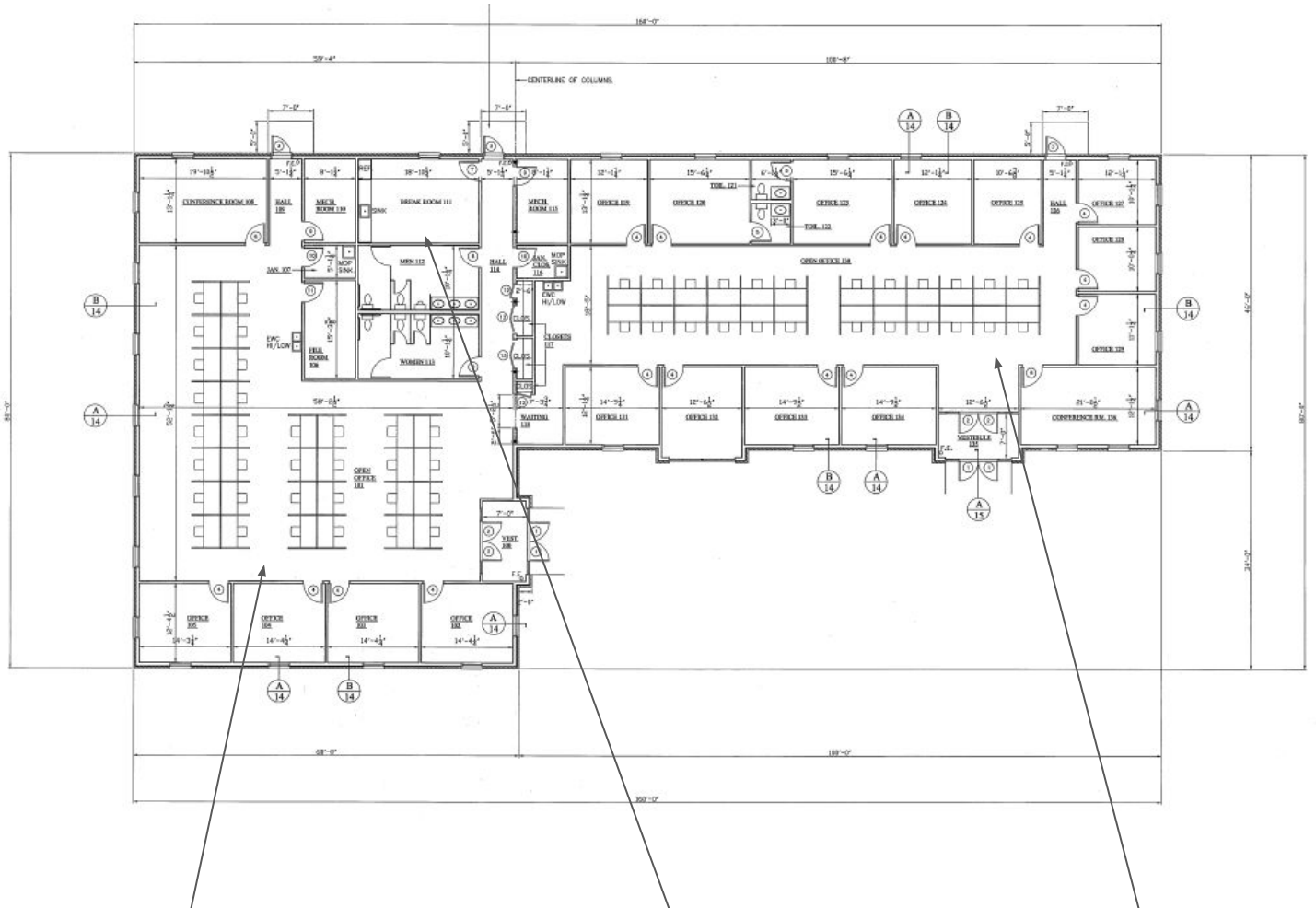




3001 ½ Gill St. Suite A
Bloomington, IL 61704

axis360.co

1602 Tullamore Ave
Bloomington, IL



Meghan O'Neal-Rogozinski, CCIM

meghan.oneal@axis360.co

309-532-1808

Michael O'Neal

moneal@axis360.co

309-530-3591

