

AXIS 360

COMMERCIAL REAL ESTATE

3001 ½ Gill St.
Suite A
Bloomington, IL
61704
axis360.co



BUILDING SIZE

6,092 SF

YEAR BUILT

1963

LEASE TYPE

Modified Gross

AVAILABLE SPACE

2,180 SF + full basement

LEASE RATE

\$2,800/month

PARKING

6 spaces attached + street

ZONING

D2

221 E. WASHINGTON STREET, BLOOMINGTON OFFICE | LEASE

Make a bold statement by leasing this one-of-a-kind 1960's office building previously occupied as a law office. Whether you are a creative agency, a boutique firm, or any business seeking a distinctive workspace that reflects your brand's personality, this property offers a great opportunity.

Nestled along E. Washington Street in Downtown Bloomington directly adjacent to the Castle Theater, this building offers convenience and accessibility. Benefit from close proximity to the Law & Justice Center, government offices of the City of Bloomington and McLean County, as well as, many great specialty stores, bars, restaurants, and art galleries.

This office has a reception, private offices, break area, a full dry basement with two restrooms, storage and more. And a Downtown office wouldn't be complete without a walk in safe that is a great place to store files.

Parking is available in attached lot, as well as, nearby street parking.

Landlord is prepared to refresh space and will install restroom on first floor.

The statements and figures herein, while not guaranteed, are secured from sources we believe authoritative. This information is for illustrative purposes only.

Meghan O'Neal-Rogozinski, CCIM

meghan.oneal@axis360.co

309-532-1808

Michael O'Neal

moneal@axis360.co

309-530-3591

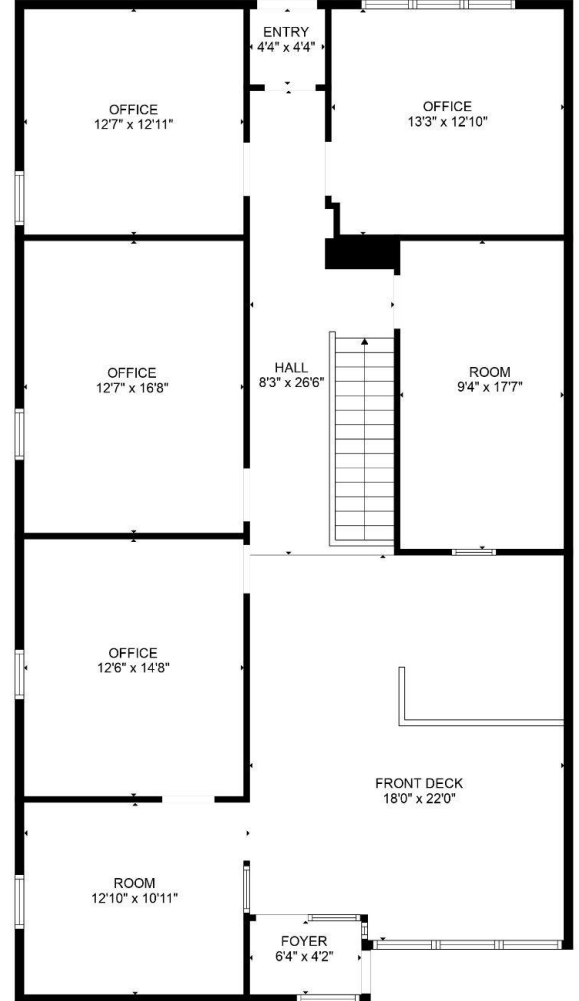
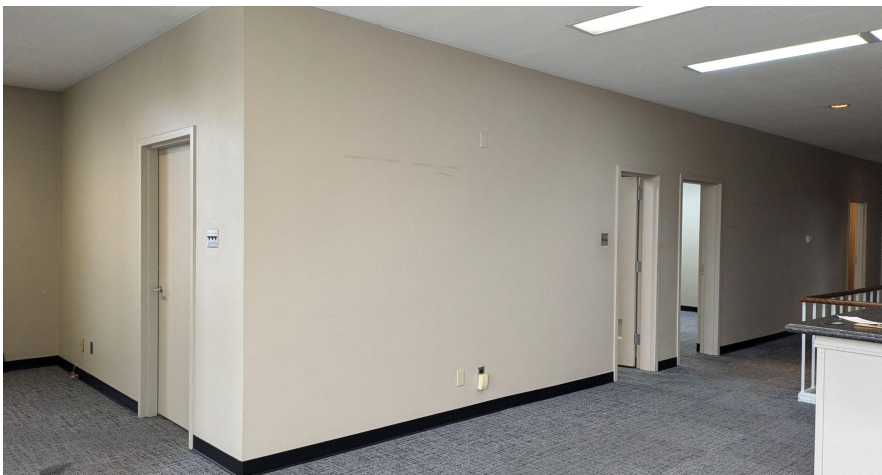
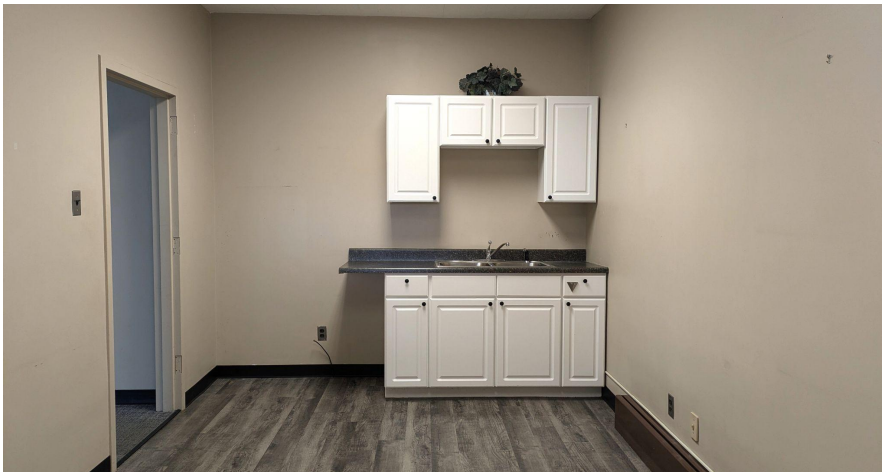




3001 1/2 Gill St. Suite A
Bloomington, IL 61704

axis360.co

221 E. Washington St. Bloomington, IL



Meghan O'Neal-Rogozinski, CCIM

meghan.oneal@axis360.co

309-532-1808

Michael O'Neal

moneal@axis360.co

309-530-3591

