

AXIS 360

COMMERCIAL REAL ESTATE

3001 ½ Gill St.
Suite A
Bloomington, IL
61704
axis360.co



BUILDING SIZE

9,724 SF

LOT SIZE

33,678 SF

PRICE

\$1,150,000

ZONED

B1 (General Business District)

PARCEL

21-11-251-029

BUILT

1980 | Remodeled 2005

TAXES (2021)

\$28,270

PARKING

34

2708 MCGRAW DRIVE, BLOOMINGTON MEDICAL OFFICE | **FOR SALE or LEASE**

This freestanding medical office building is available for both **sale** and for **lease**. Lease Rate \$15/SF Modified Gross.

It is located on the east side of Bloomington just off of Veterans Parkway between Oakland Avenue and Lincoln Street. It is less than 1 mile to State Farm Corporate South complexes and numerous retail, restaurants, business and medical facilities.

The property currently houses the offices of Midstate Podiatry and Associates. It has a large Reception and Waiting Room, private offices, with restrooms, small exam rooms, provider offices, operating rooms, laundry facilities, storage, nurses lounge and more.

600 SF suite in rear available NOW.

NEARBY BUSINESSES:



The statements and figures herein, while not guaranteed, are secured from sources we believe authoritative. This information is for illustrative purposes only.

Meghan O'Neal-Rogozinski, CCIM

meghan.oneal@axis360.co

309-532-1808

Michael O'Neal

moneal@axis360.co

309-530-3591

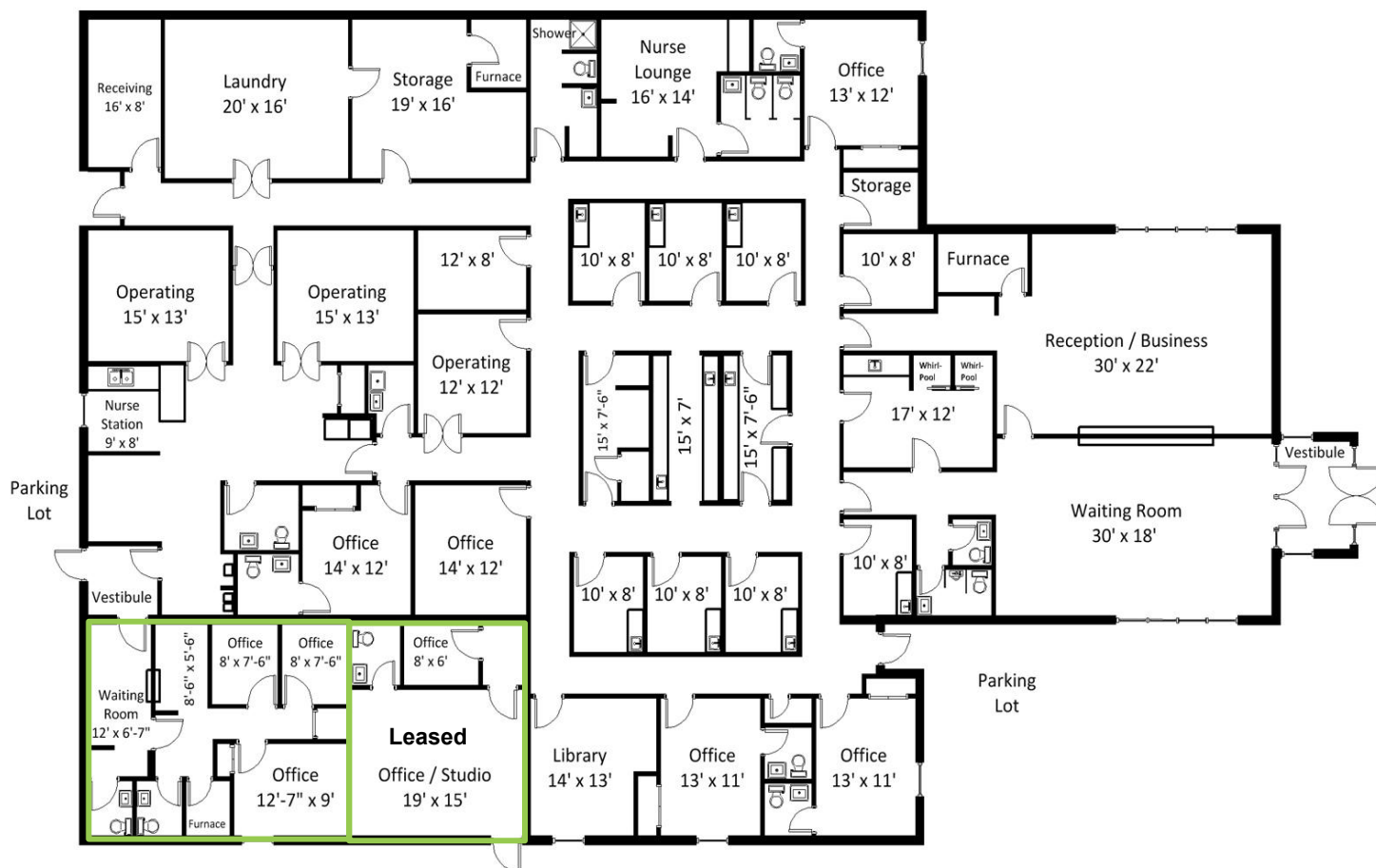




3001 ½ Gill St. Suite A
Bloomington, IL 61704

axis360.co

2708 McGraw Drive
Bloomington, IL



This floor plan is for marketing purposes and is not to be considered exact. RealtyFloorplans.com



Meghan O'Neal-Rogozinski, CCIM

meghan.oneal@axis360.co

309-532-1808

Michael O'Neal

moneal@axis360.co

309-530-3591

