



3001 1/2 Gill St. Suite A
 Bloomington, IL 61704
axis360.co

1730 BRADFORD LANE NORMAL, IL



CONSTITUTION TRAIL CENTRE

BUILDING SIZE

19,600 SF

YEAR BUILT

2007

LEASE TYPE

NNN: \$5.31/SF

LEASE RATE

\$13.00/SF

AVAILABLE SPACE

1,610 & 3,200 SF

TRAFFIC COUNT

13,700 cpd Main Street

Building 1730 is a 19,600 SF retail building within the greater shopping center, anchored by Schnuck's grocery store and AMF Movie Theater. The multi-tenant building tenants include Boyle Dental, Shear Logic, Moe's Southwest Grill, Castle Nail Spa, OAF OnCall and PIP Printing. There is plenty of parking in this high visibility location seen from Rt 51/Main Street.

SUITE 175: 1,610 SF

- This suite is raw space ready for finish. The space is situated next to OSF OnCall and Shear Logic hair salon, inline space.

SUITE 185: 3,200 SF

- This suite was built out for and occupied by Royal Publishing. The space has an open front retail area fully carpeted. Single private office up front, back storage area with private restrooms and small data room. Can be divided into two units.



The statements and figures herein, while not guaranteed, are secured from sources we believe authoritative. This information is for illustrative purposes only.

Meghan O'Neal-Rogozinski, CCIM

meghan.oneal@axis360.co

309-532-1808

Michael O'Neal

moneal@axis360.co

309-530-3591









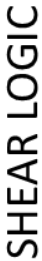

3001 1/2 Gill St. Suite A
Bloomington, IL 61704

axis360.co

1730 BRADFORD LANE NORMAL, IL

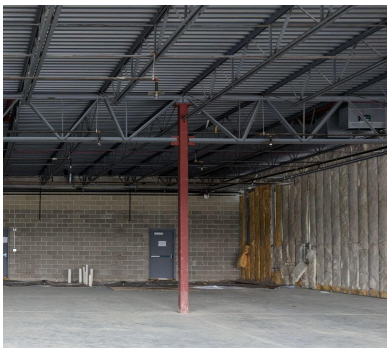
Bay # 165A	Boyle Dental	2,395 sf
Bay # 168	LEASED	1,615 sf
Bay # 170	LEASED	1,615 sf
Bay # 175	AVAILABLE	1,610 sf
Bay # 180	Shear Logic	1,600 sf
Bay # 185/190	AVAILABLE	3,200 sf
Bay # 195	Moe's SW Grill	2,400 SF
Bay # 200	Gaming Parlor	1,560 SF
Bay # 205	Castle Nail Spa	1,605 sf
Bay # 210	AVAILABLE	1,610 sf

	#210
CASTLE NAIL SPA	#205
Gaming: Coming Soon	#200

						
#165	#168	#170	#175	#180	#185	#195

SUITE 175

SUITE 185



Meghan O'Neal-Rogozinski, CCIM

meghan.oneal@axis360.co

309-532-1808

Michael O'Neal

moneal@axis360.co

309-530-3591

